

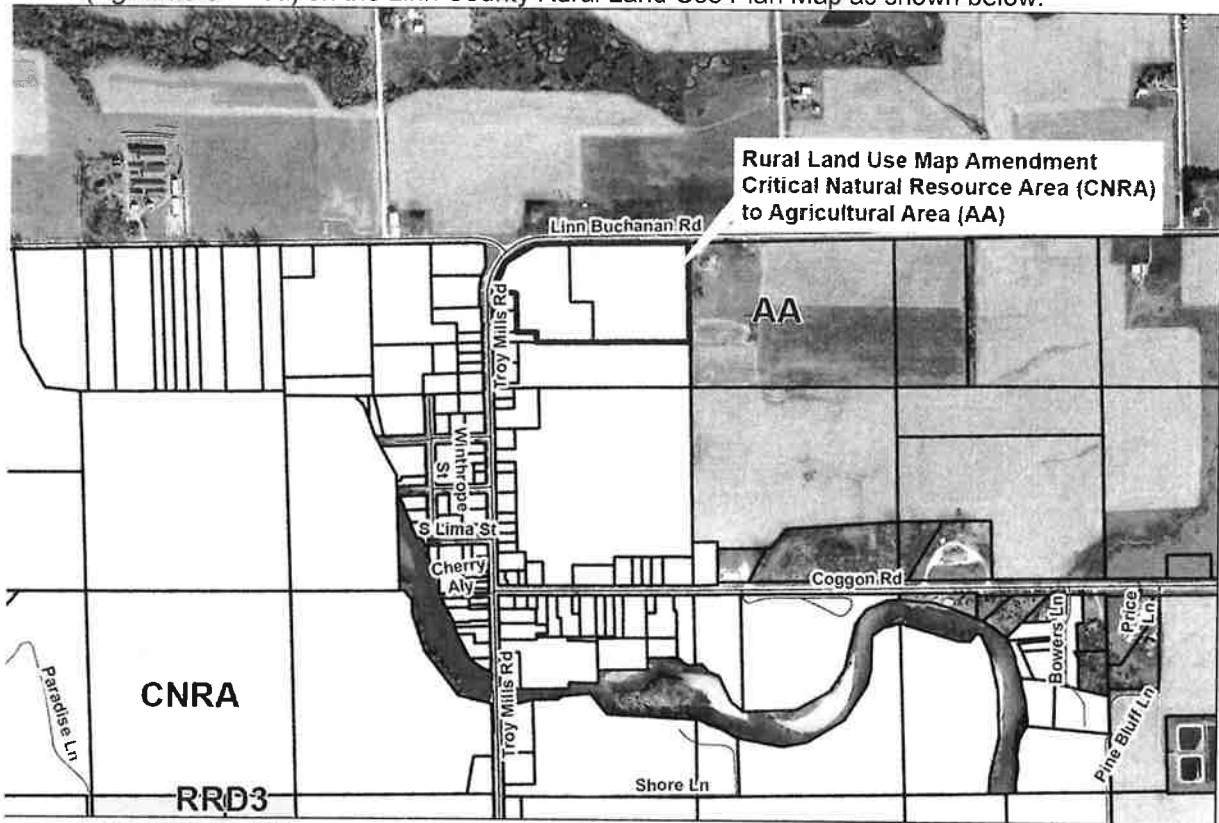
Prepared by Jessie Black
Linn County Planning & Development
935 2nd Street S.W., Cedar Rapids, Iowa 52404-2100
(319) 892-5130
Return to Becky Shoop, Auditor's Office

LINN COUNTY RESOLUTION # 2020-11-116

**AN AMENDMENT TO THE LINN COUNTY
2000 RURAL LAND USE MAP**

BE IT RESOLVED by the Board of Supervisors, Linn County, Iowa, that the following amendment, Case JA20-0004, be made to the Rural Land Use Map of the Linn County Comprehensive Plan, dated July 19, 2013:

Amend the Rural Land Use Map designation from CNRA (Critical Natural Resources Area) to AA (Agricultural Area) on the Linn County Rural Land Use Plan Map as shown below.



LI
LINN COUNTY PLANNING & DEVELOPMENT
JEAN O'LEARY LINN COUNTY PUBLIC SERVICE CENTER
935 2nd ST SW
CEDAR RAPIDS, IA 52404
PH: 319-892-5141 | FAX: 319-892-5155

**JA20-0004 & JA20-0005
Rural Land Use Map Amendment**

0 0.075 0.15 0.3 Miles



Passed and approved this 4th day of November, 2020

Linn County Board of Supervisors

[Signature]
Chair

[Signature]
Vice Chair

[Signature]
Supervisor

Aye:
Nay:
Abstain:
Absent:

Attest:

[Signature]
Joel Miller, Linn County Auditor

State of Iowa)
) SS
County of Linn)

I, Joel Miller, County Auditor of Linn County, Iowa, and Clerk to the Board of Supervisors, Linn County, Iowa, hereby certify that at a regular meeting of the said Board of Supervisors, the foregoing resolution was duly adopted by a vote of:

[Signature]
Joel Miller

Subscribed and sworn to before me by the aforesaid Joel Miller, [Signature]

on this 4 day of Nov., 2020.

[Signature]
Notary Public State of Iowa

