

Linn County COVID-19 Vaccine Distribution

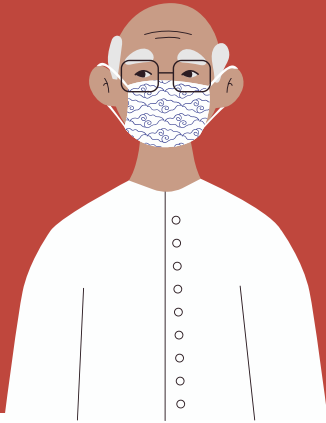
PHASE 1B



Equal amounts of vaccine will be available to Adults 65+ and 1B Tiers.

What is the process to get vaccine in this phase?

Adults 65+



I want to make a vaccine appointment for myself or loved one.

- Linn County Public Health works with providers to allocate vaccine, but does not oversee their appointment process.
- Due to limited amount of vaccine available, appts. are required and are anticipated to fill quickly. More appts. will open as supply increases.
- Hospitals, clinics, and pharmacies have their own process for contacting eligible patients and making vaccine appts. available. Many providers also offer appts. to non-patients.
- Vaccine providers may be contacting patients by mail, phone, text, email, or messaging such as MyChart. Providers also update information on their websites.
- For questions or help finding a primary care provider, dial (319) 892-6097 to reach our COVID-19 vaccine call center.

Phase 1B Tiers



Phase 1A & 1B Tiers are notified of how to make a vaccine appointment through their employer.

1. Employer completes online registration form for employers.
(LCPH will sub prioritize while supply is limited)
2. LCPH contacts vaccine provider.
3. LCPH notifies employer of the vaccine provider they are matched with.
(Employers do not call vaccine provider)
4. Vaccine provider contacts employer.
5. Vaccine provider schedules appointments for employees as vaccine supply allows.
(You may have to start over if you miss your appt.)
6. Employee travels to vaccine provider.
(Vaccine appt. is not on worksite)

For more information, visit LinnCounty.org/Vaccine